



Lithium Titanate Oxide

LTO 2.3V 30AH Prismatic Cell



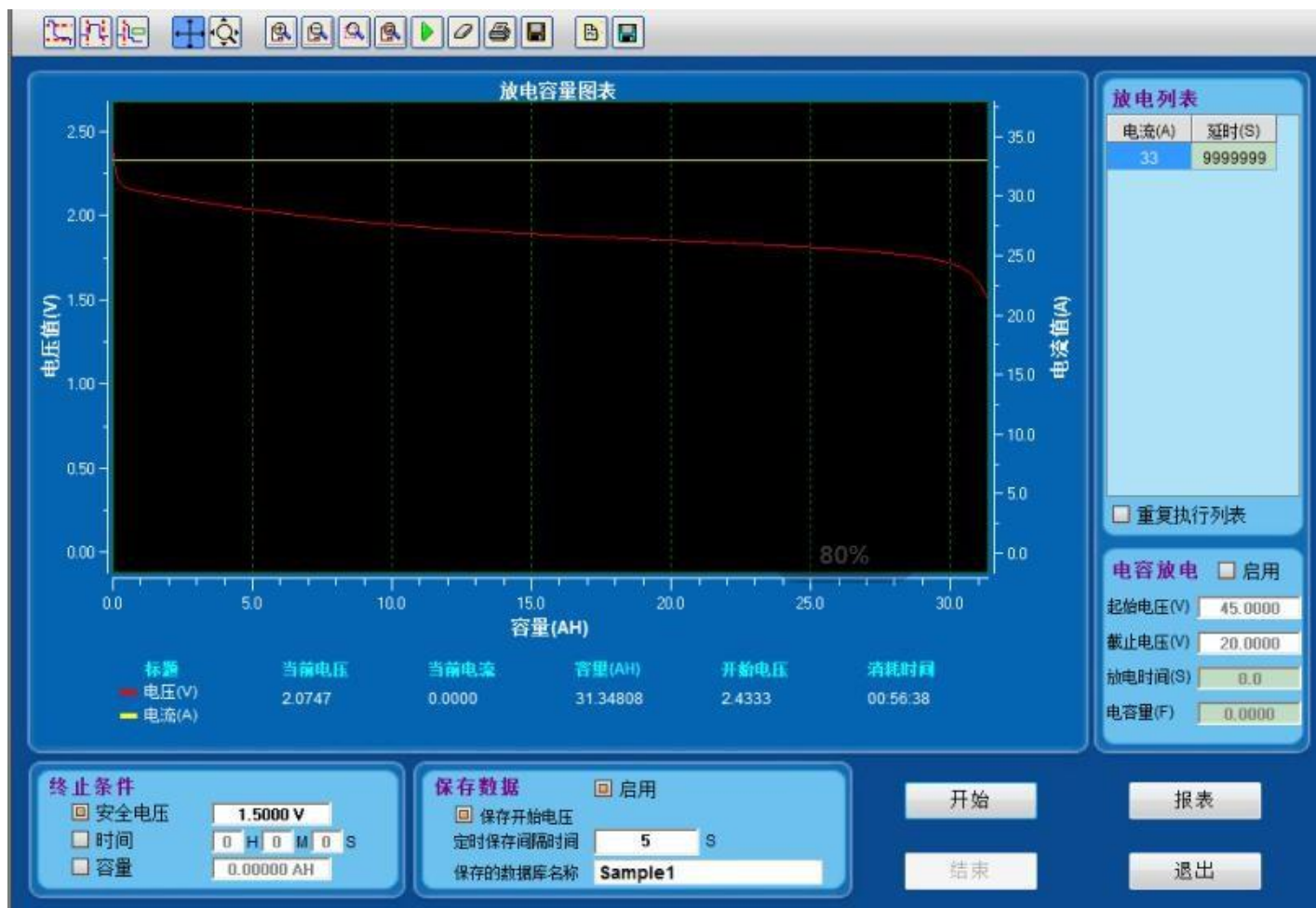
Key Features

1. FASTER CHARGING: fully charged in 10 minutes
2. HIGH DISCHARGE RATE: up to 10C
3. WIDE WORKING TEMPERATURE RANGE: -50°C ~ 65°C
4. VERY LONG LIFETIME: over 25,000 cycles

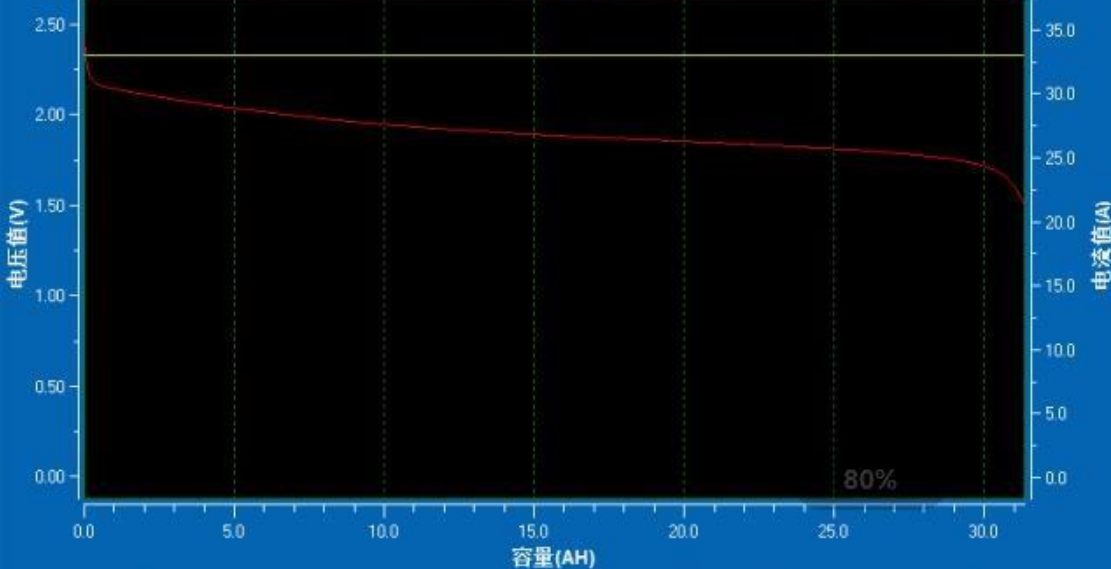
Technical specification

LTO-30Ah	Specifications
Battery type	Lithium Titanate Battery (LTO)
Manufacturer	Yinlong
Electrical data	
Nominal capacity	30/31.5 Ah
Nominal Voltage	2.3 V
Internal resistance	≤ 0.8mΩ
Max. charging current	10 C (300 A)
Charging upper limit voltage	2.9V
Max. discharge current	10 C (300 A)
Discharge cut-off voltage	1.5 V
Cycle lifetime	25,000
Operational requirements	
Operating ambient temperature/ Storage ambient temperature	-50°C ~ 65°C
Storage humidity	<70%
Mechanical data	
Weight	1.01kg
Cell construction type	Prismatic
Cell Length	173 mm
Cell height (excluding terminals)	97 mm
Cell Thickness	27.8 mm
Energy Density	140Wh/L

Curve



放电容量图表



标题	当前电压	当前电流	容量(AH)	开始电压	消耗时间
电压(V)	2.0747	0.0000	31.34808	2.4333	00:56:38
电流(A)					

放电列表

电流(A)	延时(S)
33	9999999

重复执行列表

电容放电 启用

起始电压(V) 45.0000
截止电压(V) 20.0000
放电时间(S) 0.0
电容量(F) 0.0000

终止条件

安全电压 1.5000 V
 时间 0 H 0 M 0 S
 容量 0.00000 AH

保存数据

启用
 保存开始电压
定时保存间隔时间 5 S
保存的数据库名称 Sample1

开始

报表

结束

退出